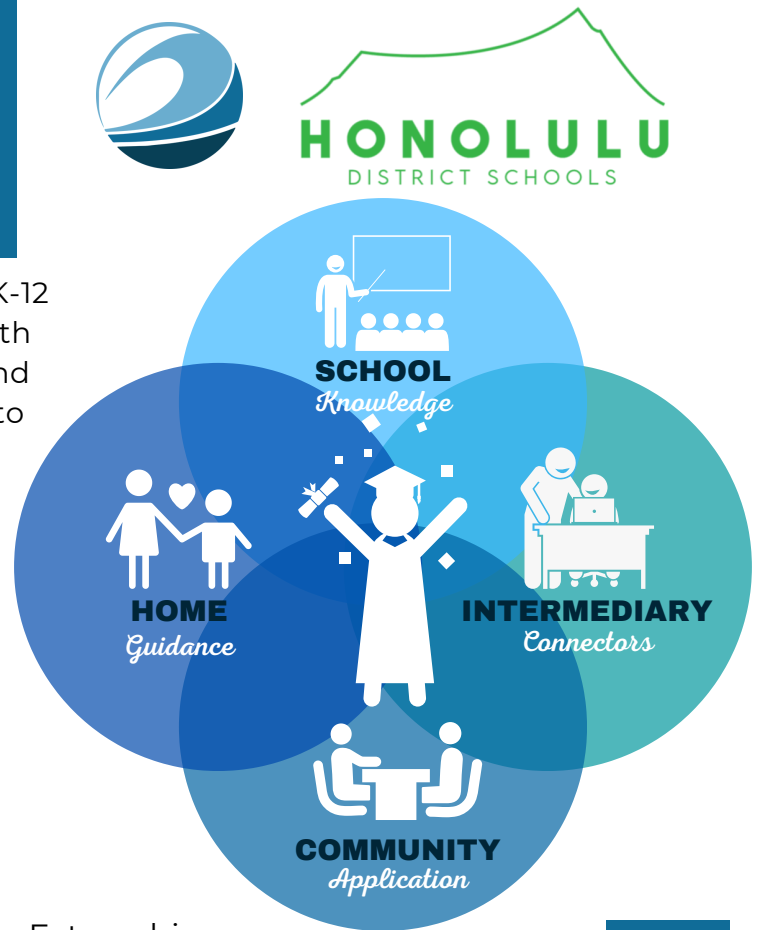


# Intermediary Driven Work-Based Learning Opportunities

Providing college and career connections for our K-12 students by linking our students and teachers with industry and academic partners. Our Honolulu and Windward Oahu schools will be well-positioned to establish a sustainable, best-fit talent pipeline.

## *Circle of Support* **Customized Learning, Creating Connections, & Building Partnerships**



### STUDENT-FOCUSED

- Internships
- Career inquiry and shadowing
- Virtual career-focused conversation
- Capstone projects
- Project-based Learning
- Virtual and onsite career events
- Virtual/onsite career-focused visits
- Social capital and networking
- Career readiness and awareness
- Apprenticeship and certifications

- Externships
- Industry-designed support
- Professional Development
- Curriculum Support
- CTE Department Support
- Advisory Board
- WBL Presentations
- Social Capital and Networking
- School-based CTE events
- Career-focused visits

### EDUCATOR-FOCUSED

#### Contact Information

To start the process of participation,  
please contact the  
Hawaii Workforce Pipeline team at:  
[jennifer@hawaiiworkforcepipeline.com](mailto:jennifer@hawaiiworkforcepipeline.com)  
[wbl@hawaiiworkforcepipeline.com](mailto:wbl@hawaiiworkforcepipeline.com)



Dr. Jennifer  
Sagon-Taeza  
Honolulu  
Senior  
Intermediary  
Manager

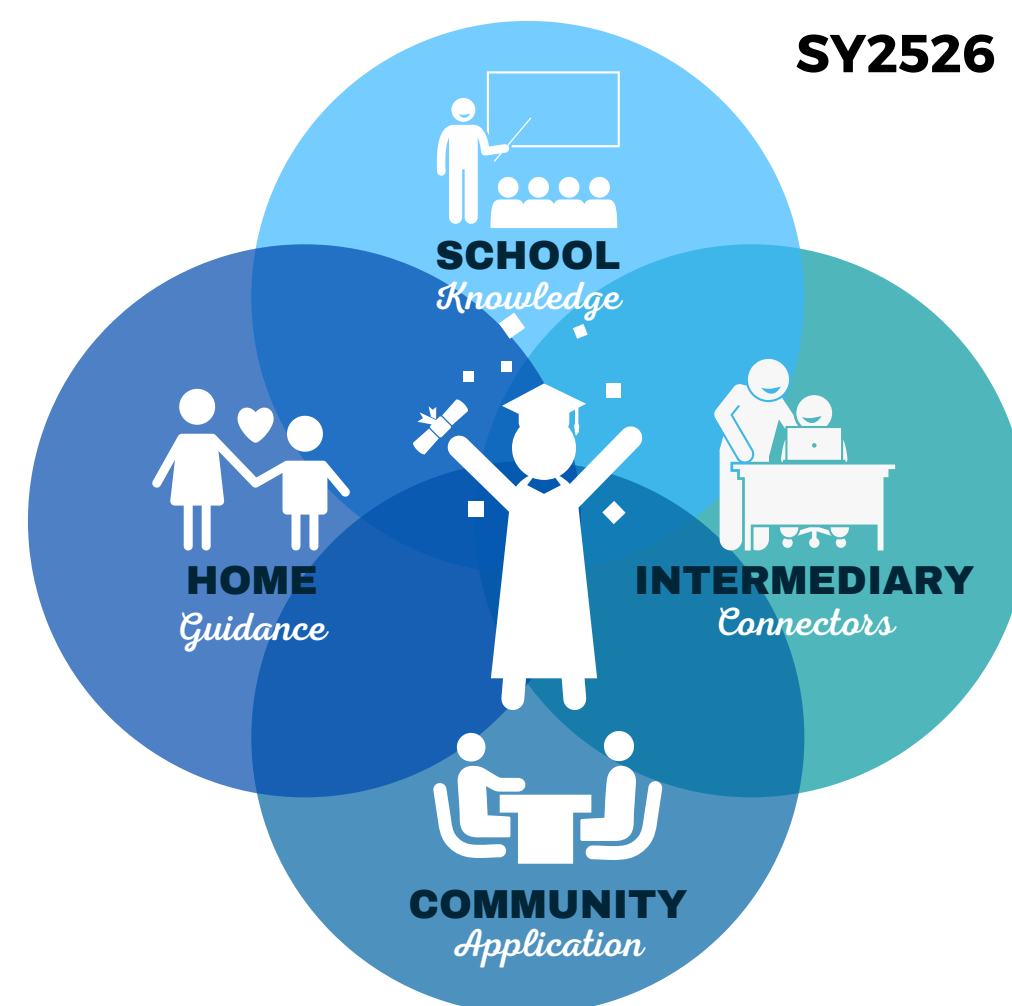


Rachelle  
Otero Harris  
Honolulu  
Work-Based  
Learning  
Coordinator

# Work-Based Learning Support

*Intermediary Facilitated  
Work-Based Learning in Honolulu District*

Personalized Learning,  
Creating Connections, &  
Building Partnerships



## Educator - Focused Support

 <b>Teacher Externships</b>	 <b>Advisory Board</b>	 <b>School Events</b> <small>Career fair, Judges, Mock interviews etc.</small>	 <b>Industry-led Presentation</b>	 <b>Field Trip</b> <small>In-person or Virtual</small>
--------------------------------	---------------------------	--	--------------------------------------	--



[bit.ly/educators2526](https://bit.ly/educators2526)

## Student - Focused Support

<b>INTERNSHIP</b> <b>3 or more wks: 60 hrs or more</b> <ul style="list-style-type: none"> <li>Combined job shadowing and experiential learning</li> <li>Hours dependent on expectations of student's CTE mentor</li> </ul>	<b>CAREER SHADOWING</b> <b>2 days to 2 wks: less than 60 hours</b> <ul style="list-style-type: none"> <li>Combined job shadowing and experiential learning</li> <li>Hours dependent on expectations of student's CTE mentor</li> </ul>	<b>CAREER INQUIRY</b> <b>1 day: 4 or more hrs</b> <ul style="list-style-type: none"> <li>For students who have an interest in a specific career pathway that may or may not be in the realm of their current CTE pathway</li> </ul>	<b>VIRTUAL CAREER-FOCUSED CONVERSATION</b> <b>Virtual 1 hour</b> <ul style="list-style-type: none"> <li>Engage in conversation with an industry professional to learn about career-related opportunities, relevant essential skills, educational requirements</li> <li>Build a professional network.</li> </ul>
--	--	---	---



[bit.ly/students2526](https://bit.ly/students2526)

## REAL - Professionalism Workshop

<b>All About You</b>  Personal goals Professional goals Career interests	<b>WBL Opportunities</b>  Career interests WBL Options Research and Outreach Request for support	<b>Professionalism</b>  Professionalism Communication and Social Media Professional image Interview readiness: Resume/Cover letter	<b>Social Capital</b>  Building a professional network Values of social capital
--	---	---	--



[bit.ly/educators2526](https://bit.ly/educators2526)

*For more information contact:*

Cindee Izuo  
Honolulu District CTE Resource Teacher  
[cindee.izuo@k12.hi.us](mailto:cindee.izuo@k12.hi.us)

Jenn Sagon-Taeza  
Honolulu District CTE Intermediary  
[jennifer@hawaiiworkforcepipeline.com](mailto:jennifer@hawaiiworkforcepipeline.com)